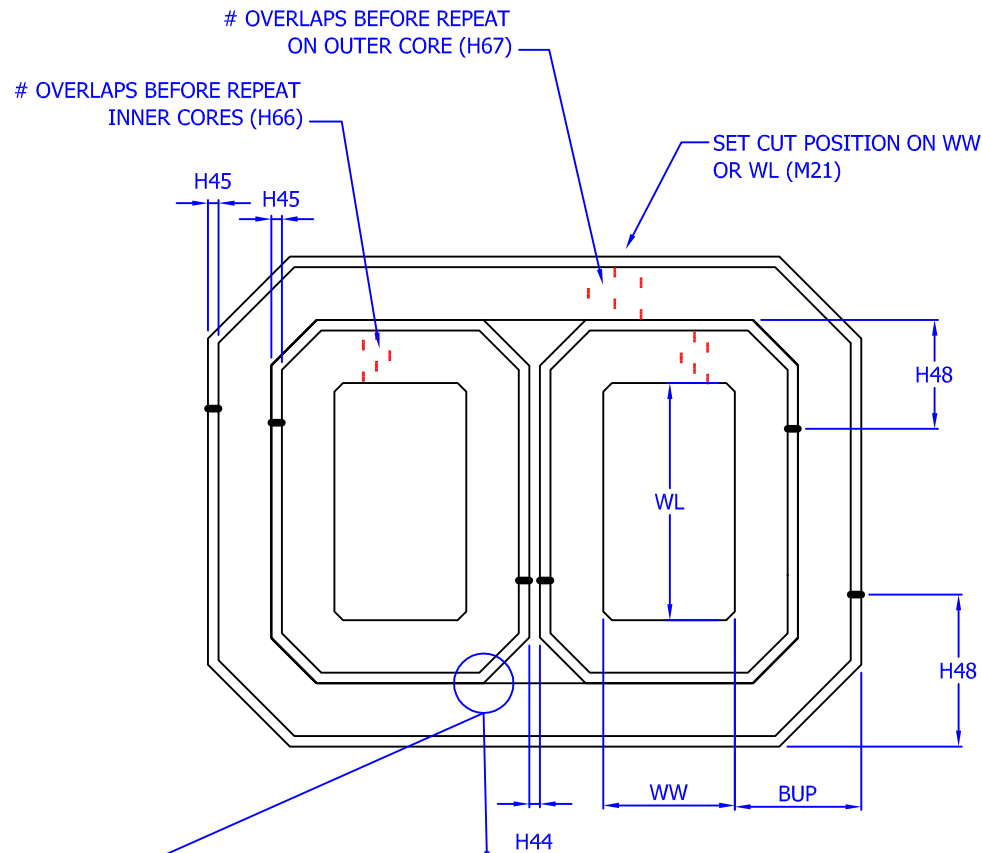
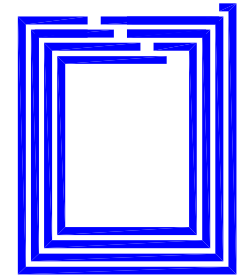
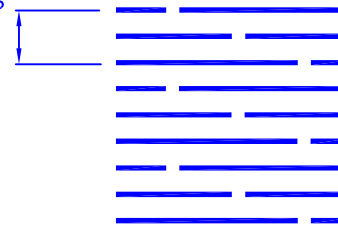




3rd Angle Projection
DO NOT SCALE



NUMBER OF OVERLAPS
BEFORE REPEAT
(3 SHOWN)



GAPS DEFAULT TO 0 MICRON
WIDE. - SHOWN EXPLODED
FOR CLARITY

INNER CORE RADII DEFAULT
TO 3MM

WL	MM	+ 0.5 - 0.0
WW	MM	+ 0.5 - 0.0
BUP	MM	+ 0.5 - 0.0
SW	MM	+ 0.25 - 0.25
M21	1	
M22	0	
H66	3	
H67	8	
H04	3000 microns	
H44	0	
H45	0 microns	
H48	30 %	
MATL		

- CUT POSITION WW =1
WL =0

- CORNER SELECTION 0=45°
1=30°

- # OVERLAPS ON INNER CORES

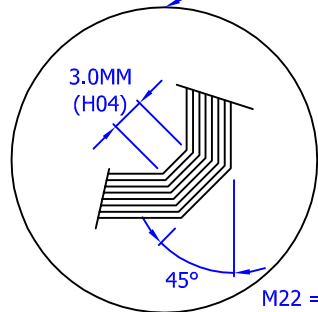
- # OVERLAPS ON OUTER CORE

- INNER CORE RADIUS

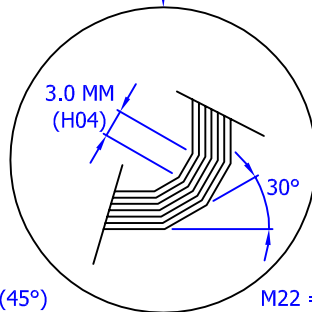
- SPACE BETWEEN INNER CORES

- BUTT OUTER BUILDUP

- BUTT OUTER CUT POSITION



M22 = 0 (45°)



M22 = 1 (30°)

A.E.M. PART#

E-LAP7

SPIRAL WOUND E-CORE WITH 30°/45° CORNERS AND
A ONE CUT END OVERLAPPED DISTRIBUTED GAP FACE

Title: 3 PHASE 30°/45° DISTRIBUTED GAP FACE UNICORE

Eng : M. NAVACCHI

Scale:

Drawing File

Assoc Text File

Assoc Program

Date : DEC 2001

No Scale

E-LAP7

A.E.M. CORES PTY LTD
95 BEDFORD ST GILLMAN SA 5013

Phone: 08 8341 0086
Fax: 08 8341 0225