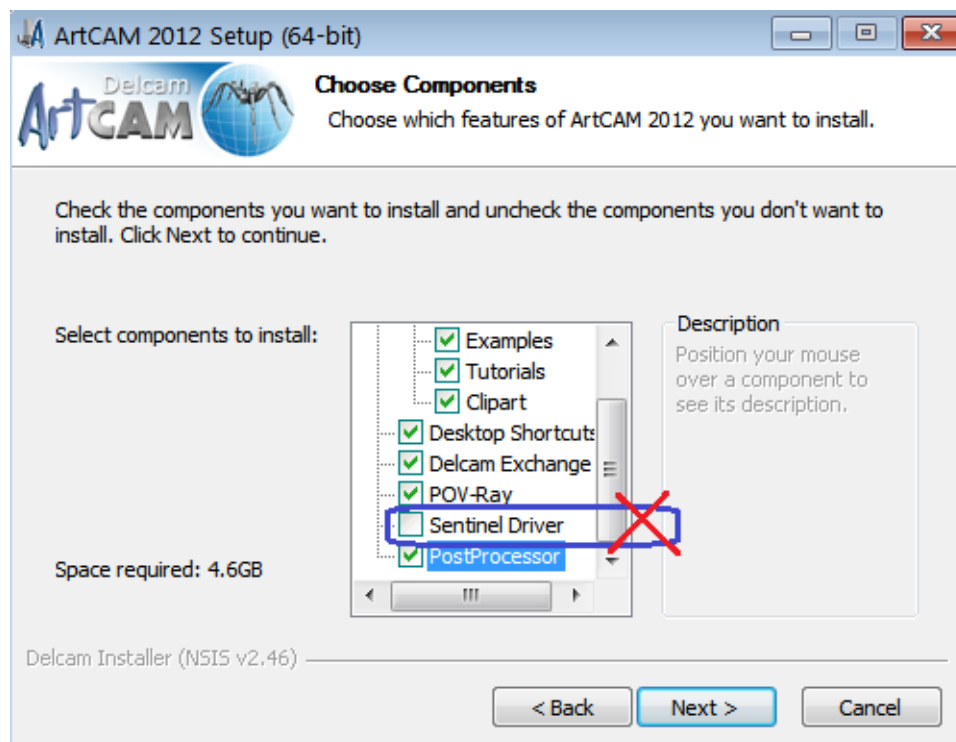




- 1) Run **Setup.exe** and install ArtCAM 2012.
Sentinel Drivers NOT need to install !

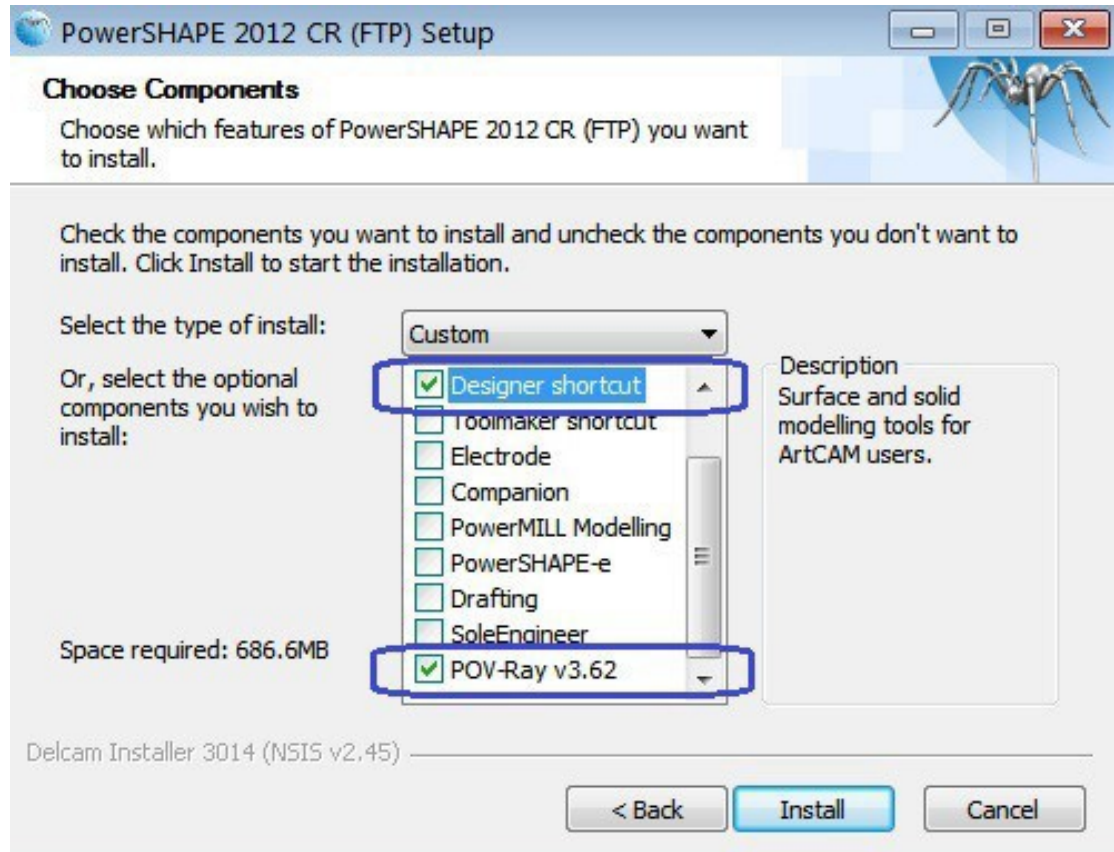


- 2) Go to the "ArtCAM 2012\ Crack \ArtCAM 2012 SP2" folder and copy two folders Exec and Exec64 into C:\Program Files\ArtCAM 2012 and overwrite original files. For Exchange and PostProcessor you need also replace files, instructions are inside Crack folder.
- 3) In "ArtCAM_2012\ArtCAM_Install\Documentation" folder there is UserGuides in european languages and training courses for ArtCAM and Delcam Designer.

Tip: after installation ArtCAM, - at C:\Program Files\ArtCAM 2012\Exec\Language\your language\ , you can find help file in your own language – this is the file ArtCAMUserGuide.chm.
 Rename it to ArtCAMProReferenceHelp.chm, and you will be able open it by pressing the F1 key when ArtCAM running.

Delcam Designer

- 1) Install **PowerSHAPE_2012** and **SP7** patch. During install choose only **Designer_shortcut** and, if you need photorealistic rendering – **POV-Ray**.



- 2) Install **PS_Catalogs_2012** and **SP7** patch.
After installation, - copy file powershape.exe from folder ArtCAM 2012\ Crack \PowerSHAPE 2012 SP7 into folder with installed PowerSHAPE. Instructions are inside file readme.txt.
- 3) If you need – install the English documentation **PS_Doc_2012** and two tutorials (**PS_Tutorial**) for ArtCAM Jewelsmith in english.